

INDOFINE Chemical Company, Inc.

121 Stryker Lane, Bldg. 30, Suite 1 • Hillsborough, NJ 08844 • U.S.A.

Phone: (908) 359-6778 • FAX: (908) 359-1179

website: www.indofinechemical.com

e-mail: chemical@indofinechemical.com

CERTIFICATE OF ANALYSIS

Catalog Number: 020233S

Product Name: CATALPOL with HPLC

CAS Number: [2415-24-9]

Lot Number: 1907283

Chemical Formula: C₁₅H₂₂O₁₀

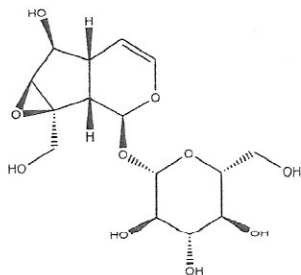
Molecular Weight: 362.34

Loss on Drying: 1.1%

Appearance: Off-white powder

Storage: Store in a cool, dry place. Protect from light.
Keep package airproofed when not in use.

Purity(HPLC): 99.03%



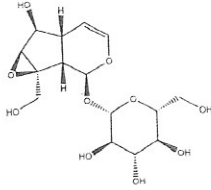
Prepared by:
Ramesh Mandadi
Ramesh Mandadi
Director of Operations

Reviewed and approved by:
Sujata Moton
S. Moton
VP



INDOFINE Chemical Company, Inc.

121 Stryker Lane, Bldg. 30
Hillsborough, NJ 08844 USA
Phone: (908) 359-6778; Fax: (908) 359-1179

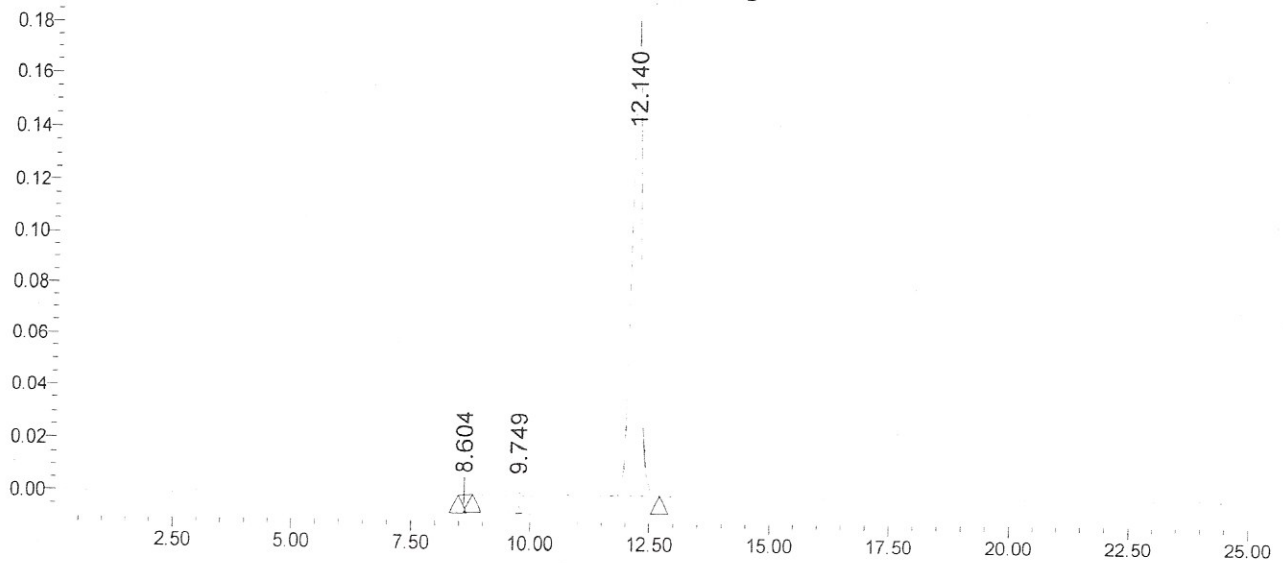


HPLC ANALYSIS

Catalog No.: 020233S
Product Name: Catalpol
Lot No.: 1907283

SAMPLE INFORMATION			
Sample Name:	Catalpol	Acquired By:	prf01
Sample Type:		Sample Set Name:	
Vial:	88	Acq. Method Set:	Catalpol
Injection #:	1	Processing Method:	sample
Injection Volume:	10.00 ul	Channel Name:	205.0
Run Time:	25.0 Minutes	Proc. Chnl. Descr.:	PDA 205.0

Auto-Scaled Chromatogram



Peak Results

	RT	Area	% Area	USP	USP
1	8.604	13722	0.56	1573	43877.61
2	9.749	10124	0.41	1187	46572.25
3	12.140	2428737	99.03	178147	18879.32

Prepared by:
Ramesh Mandadi
Ramesh Mandadi
Director of Operations

Reviewed and Approved by:
Sujata Moton
Sujata Moton
VP